



OPERATING INSTRUCTIONS

MODEL # R210

Analog Electronic Larynx

OPERATING THE UNIT

It is easy to control your speech with only one hand.

NO TOOLS REQUIRED.



On/Off Button:

To speak, push the button and release when you are finished.

Pitch Wheel:

Turn this wheel to set a higher or lower pitch. There is no need for further adjustment after you have achieved your desired pitch level.

Volume Wheel:

Turn this wheel to adjust the speaking volume. The + or - icons indicate higher or lower volume settings.

Practice

Place the Romet® Electronic Larynx to your neck and practice finding your “sweet spot” to achieve your best vocal tone.

*NOTE: This spot can be many places on either your neck or the side of your mouth; each person is different depending upon your skin texture and the amount of radiation you have received. Look into a mirror and repeat simple sentences to achieve vocal clarity. If possible, record your voice and play it back to hear how you sound. **Practice regularly!***

Battery Charging

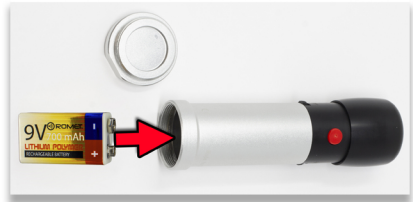


Included with your electronic larynx unit you will find two 9V Lithium-Ion batteries. To charge the batteries, simply plug in the provided Type C USB cable into the charging port located on the battery. Charging can be achieved via any standard USB port or with the included Romet charging brick.

Red LED Light = Charging.
Green LED Light = Fully Charged.

Battery Insertion

Remove the battery end cap from the unit and insert the 9V Lithium battery into the barrel. When inserting the battery inside your device, please take care to match the right polarities (+ and - ends) marked on the battery. For convenience, your Romet batteries have been color coded red and blue to match the battery terminal socket inside your device. Electrical contact will be made automatically when the barrel end cap is screwed into the end of the barrel.



IMPORTANT INFORMATION

Please follow local requirements to recycle electronic appliances and batteries.

Normal 9V alkaline batteries will also operate your Romet® electro-larynx.

Manufactured & Distributed Worldwide by:

Fountain Head Marketing, Inc.

Db/a: Romet Electronic Larynx

14410 Saratoga Pass

San Antonio, TX 78254-1860

USA

Phone: 1.210.858.5189

Fax: 1.210.858.9608

Email: info@romet.us

Web: <http://www.romet.us>

CE **European Union Representative**
EuropeCer Alsstr. 97
41063 Mönchengladbach, Germany

FDA
Registration: 3007615474
Listing: D199809

ISO
13485:2016