



**ROMET MINI (R355)**

**Digital Electronic Larynx with  
Intonation**

**MSRP: \$515.00 USD (FOB USA)**

**Distributor pricing available upon request**

### **The Smallest Powerful Electrolarynx on the Market**

The **Romet MINI R355** is a compact, high-performance digital electrolarynx designed for natural-sounding speech with intuitive control. Built for reliability, portability, and ease of use, it delivers strong acoustic output in a discreet, lightweight form factor.

- Ultra-compact, ergonomic design
- Advanced digital sound generation with **intonation capability**
- Durable carbon fiber–reinforced 3D-printed housing

### **Key Features**

#### **Intelligent Power Management**

Optimized circuitry with **deep sleep functionality**:

- Automatically conserves battery life when not speaking
- Wakes within approximately **0.5 seconds** upon activation

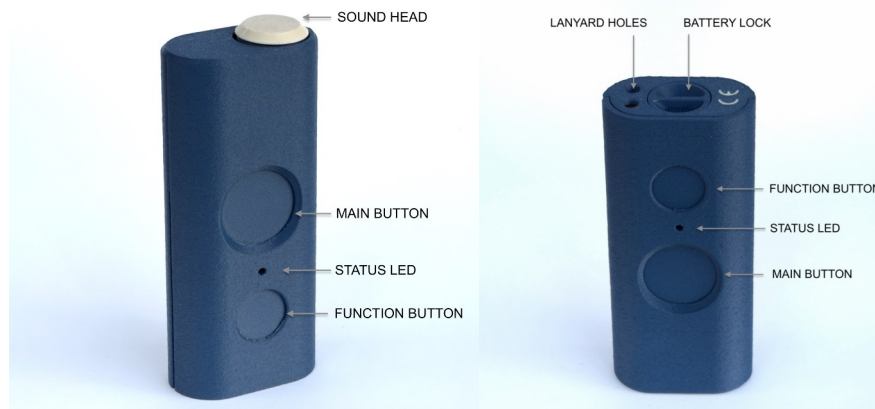
***• Romet has designed and manufactured electronic larynx devices in the USA for more than 40 years. Tom Dodson, owner of Fountain Head Marketing Inc. dba Romet, is pleased to announce a recent collaboration with UHURA, a technology engineering and design firm in Warsaw, Poland, led by CEO Konrad Zielinski. Who is also a laryngectomee, Mr. Zielinski brings direct insight into patient needs in this product category. Using its own intellectual property and patient-centered design approach, UHURA developed a new***

***mini electronic larynx with speech intonation, which is being manufactured under the Romet label for worldwide distribution as Romet model R355.***



## Dual-Control Operation

Two intuitive buttons provide full control of speech output:



### Main Button (Top / Large Button)

- Activates sound generation
- Pressure-sensitive: press harder for increased loudness and pitch

### Function Button

- Adjusts pitch modes: low, medium, high
- Enables/disables intonation (press and hold 5–10 seconds)

### Status LED Indicator

Provides real-time battery and operating status:

- **Green** – Fully charged
- **Yellow** – 75% battery or less
- **Red** – 25% battery or less
- **Blinking Red** – Below 10% (replace batteries)

### User-Friendly Design

- Integrated **lanyard holes** for portability

- Secure **twist-lock battery compartment**
- Auto shut off after extended button press (prevents accidental activation)

## Technical Overview

- Only 3.3 ounces
- 0.75in x 1in x 3.75in dimensions
- **Power Source: 3 × AAA 1.5V batteries**
  - The Romet Mini is compatible with lithium or rechargeable batteries size AAA
- Fast activation and responsive sound modulation
- Designed for placement at the neck for clear speech production
- 45-hour speech time moderate talking

## What's Included (Gift Box Contents)

- **Romet MINI R355 Electronic Larynx (ready to use upon receipt)**
- **3 AAA Lithium-ion 300 mAh rechargeable batteries w/ cable USB-C for recharging**
- **Safety lanyard**
- **2-year warranty (factory defects) not patient misuse**

## **Proven Experience You Can Trust**

**For over 40 years, Romet has provided reliable voice solutions for laryngectomized patients worldwide—combining durability, simplicity, and performance.**

### **Distributor Information**

**Fountain Head Marketing Inc.**

dba **Romet Electronic Larynx**

**14410 Saratoga Pass**

**San Antonio, TX 78254, USA**

Email: [info@romet.us](mailto:info@romet.us)

Phone: 561 797 2485 ( WhatsApp)